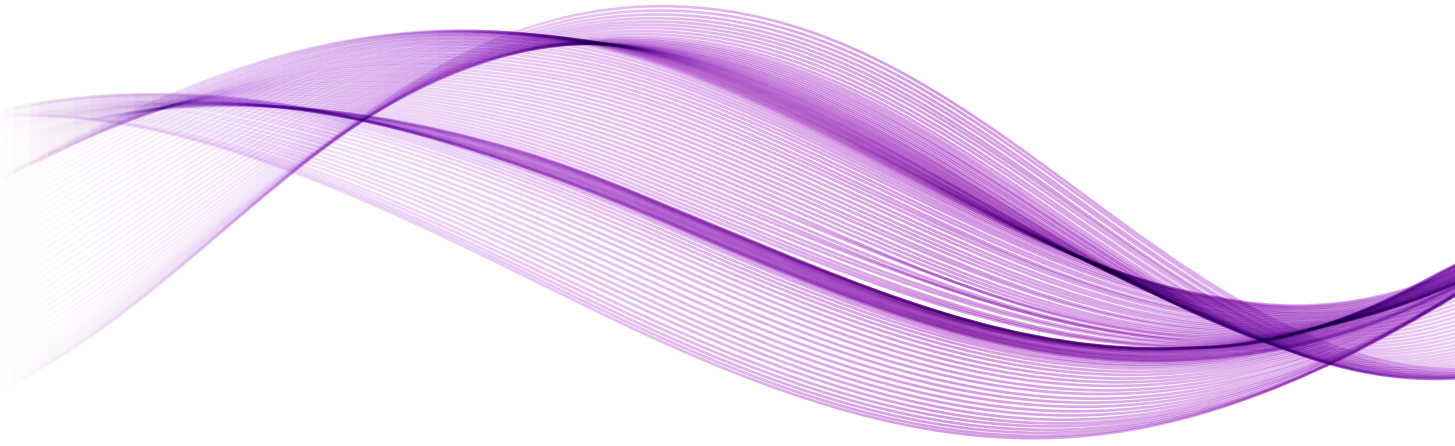


Visual Inspection

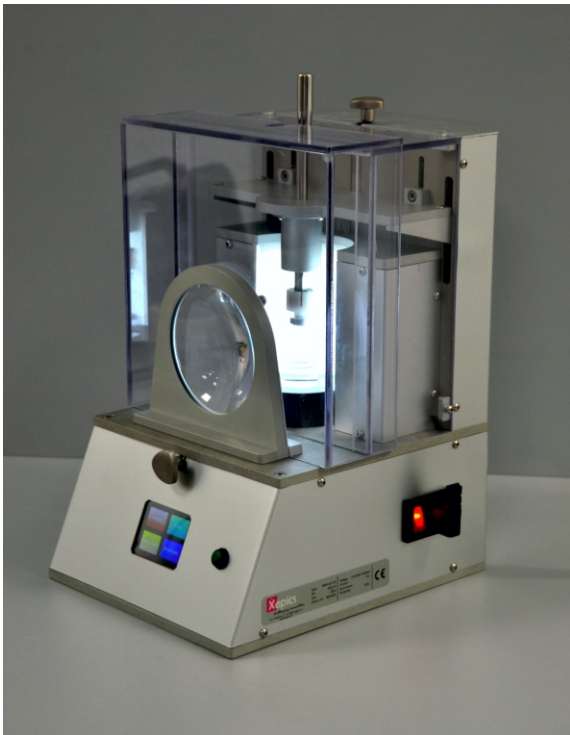


Lab Visual Inspection Equipment

The optical bench is designed to aid the operator in the visual inspection of parenteral containers

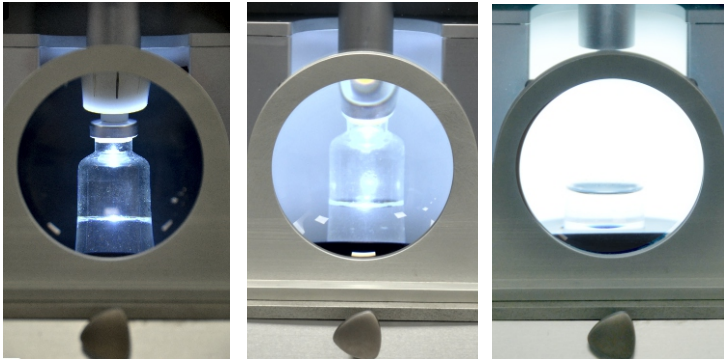
VS Lab 01 is suitable for a wide range of application including:

- Qualification of reference inspection samples used to assess the performance of automated inspection equipment
- Acceptable Quality Level (AQL) testing of containers inspected by automated systems
- Small batch visual inspection
- Verification of product rejects
- Re-inspection
- Inspection of difficult products/packages



VS LAB 01

INNOVATIVE SOLUTIONS IN PHARMACEUTICAL MANUFACTURING

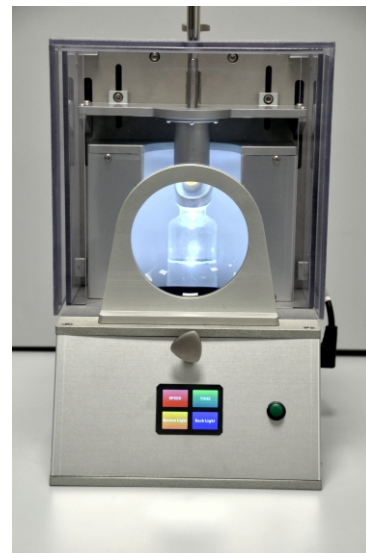
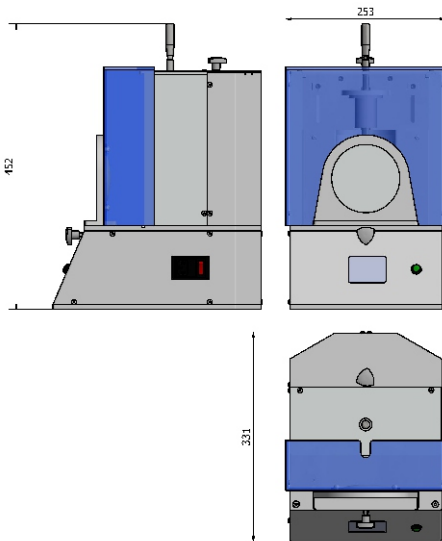


Key Benefits

- Black and White inspection backgrounds
- Back light system
- Bottom light system (Tyndall)
- Adjustable spin speed
- Spin and brake duration timer
- Adjustable light intensity

Relevant Features

- Suitable for inspection of vials, ampoules, cartridges syringes, bottles
- Wide range of container sizes: diameter [8-55]mm, height up to 150mm
- Magnifying lens 2x
- High Quality Components: all parts used in VS Lab pass strict quality control tests, ensuring a long lifespan, even with 24/7 use
- Intuitive and designed for super simple operation
- Extremely Compact design with superior clean-ability & scratch resistance



XEPICS SA

Via S. BALESTRA 27
6900 LUGANO (TI)
SWITZERLAND

Via BROGEDA, 3
69800 CHIASSO (TI)
SWITZERLAND

Tel: +41 (091) 6830839

www.xepics.com

info@xepics.com